



The pressure gauges type PG-DUAL/0-17-1/4-FM are gauges designed and approved for use on the air service side of Profit dry alarm valves. The model is based on the proven Bourdon tube measuring system.

Characteristics

- Can be used for medium water or air.
- Design: EN 837-1 & ASME B40.100.
- Pressure element: bourdon tube in copper alloy.
- Corrosion resistant casing.
- Dual scale 0-5,5 bar + retard to 17 bar (0-80 psi + retard to 250 psi).
- Including pointer stop pin.
- Accuracy class: $\pm 3/2/390$ of span (ASME B 40.100 Grade B).

Pressure limitations

- Steady: $\frac{3}{4}$ of full scale.
- Fluctuating: $\frac{2}{3}$ of full scale.
- Short time: full scale value.

Working temperature

- Ambient: -20°C to +60°C
- Medium: maximum +60°C

Approvals

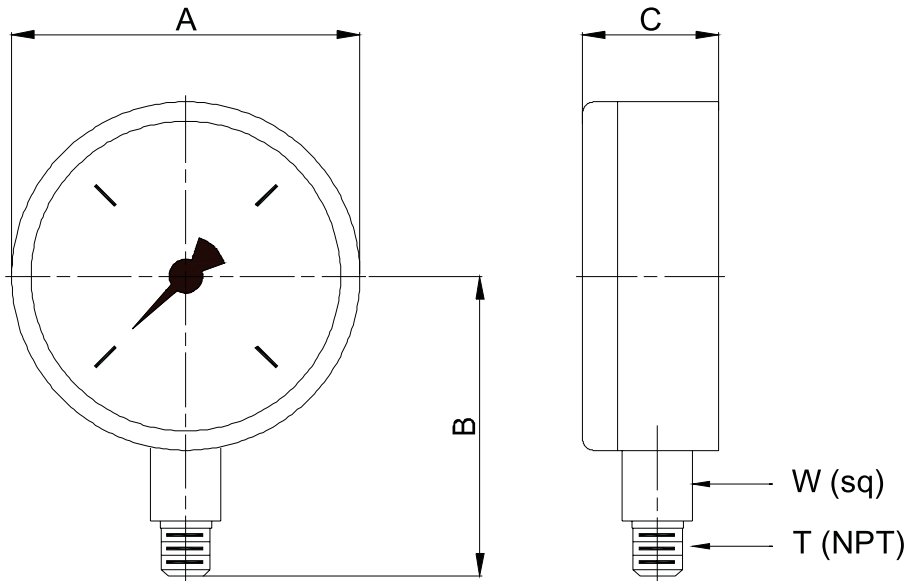
- FM approved
- UL listed

Material specifications

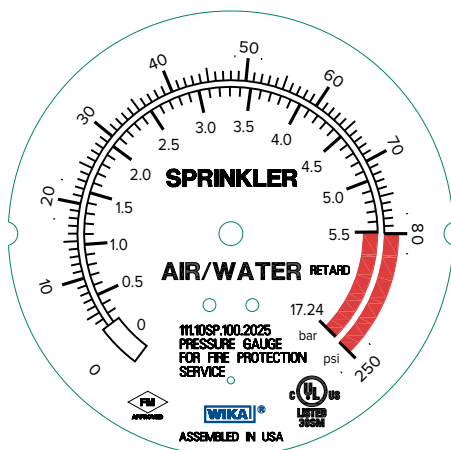
Part	Material
Case	Plastic, black
Bottom connection (EN 837-1/7.3)	Copper alloy
Pressure element	Copper alloy, C-type
Dial	Aluminium, white
Pointer	Plastic, black
Case	Plastic, black
Window	Plastic, crystal clear

Dimensions

Dimensions (mm/inch)					
Size	A	B	C	W	T
100	99	83,5	30,5	14x14	¼" Npt



Marking





Storage and handling

- Upon receipt, carefully check completely the gauge on any damage during shipment.
- Pressure gauges must be stored indoor, protected from moist.
- This is a precision measuring device, please handle with care, avoid shocks at all times.

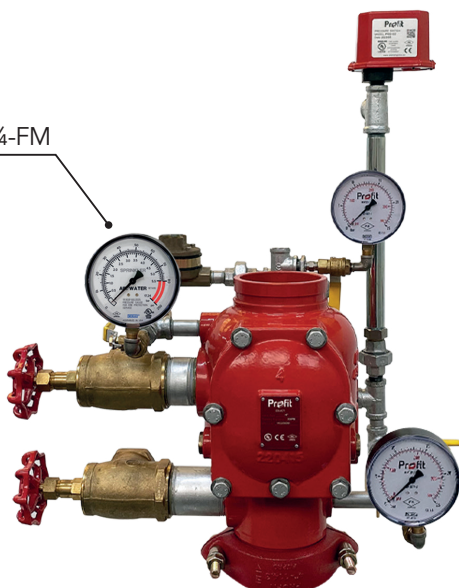


Installation

- Please use appropriate sealing material on the thread.
- Do not use the housing to apply torque when mounting the gauge, only torque the metal square bottom-connector with suitable tool.

Application example: Profit dry alarm valves DFACV & DGACV

PG-DUAL/0-17-1/4-FM



GENERAL INFO

- Installers should be trained or experienced to install and understand the product.
- Read and understand all technical datasheets and installation instructions before attempting to install, remove or adjust any Profit piping products.
- Depressurise and drain the sprinkler installation system before attempting to install, remove or adjust any Profit piping products.
- Never work on piping systems that are pressurised and / or filled with water.
- Piping Logistics reserves the right to change specifications, designs and / or standard equipment without notice and without incurring in any obligations.
- Use the necessary Personal Protection Equipment (PPE) to avoid personal injury (helmet, safety shoes and goggles, Profit gloves).



Failure to follow these instructions could result in death or serious injury and property damage.

We advise to always store our products in closed and dry environments, the products do not need any specific maintenance once installed on an aboveground sprinkler installation.

REVISION TABLE

Date	△	Notes
18/03/2025		Initial release.